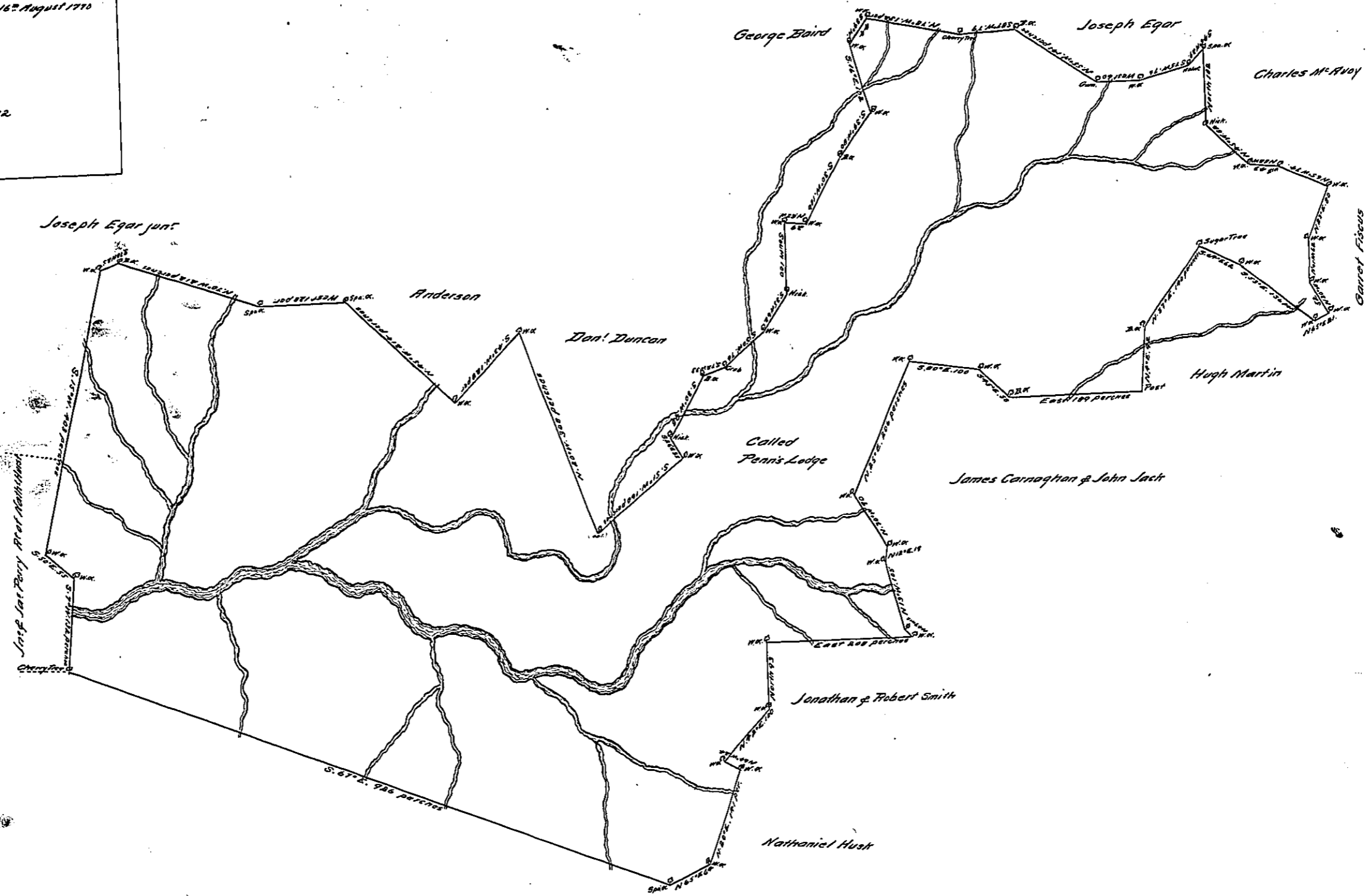


(Endorsement on back)
 Cumberland County
 Westmoreland
 The Hon^{ble} Proprietaries
 Manor on Sewickley
 5871 1/2
 Correct Containing 5568^{ac}
 Called Penn's Lodge
 Returned 16th August 1770

12



A Draught of a Tract of Land Situate South West of Proctors Improvement and on the Waters of Sewickley in the County of Cumberland containing Five Thousand ~~Four~~ Five Hundred
 & Sixty eight Acres and the allowance of Six Acres Per Cent for Roads and Highways. Surveyed the Twenty third day of April 1770 for the Use of the Honourable the Proprietaries in pur-
 suance of a Warrant bearing date the 22^d day of February 1769.
 To John Lukens Esq^r Sur^v General.

W^m Thompson D^y S^r

In Testimony, That the above is a copy of the original remaining on file in the Department of Internal Affairs of Pennsylvania, made conformably to an Act of Assembly,
 approved the 16th day of February, 1833, I have hereunto set my Hand and caused the Seal of the said Department to be affixed, at Harrisburg, the 15th
 day of August A.D. 1841.

Henry Houck,
 Secretary of Internal Affairs.